

COUNTY OF SUFFOLK



Steven Bellone
SUFFOLK COUNTY EXECUTIVE

Department of Economic Development and Planning

Natalie Wright
Commissioner

Division of Planning
and Environment

Issue Date: June 02, 2022
Expiration Date: August 01, 2022

SUFFOLK COUNTY SHELLFISH AQUACULTURE LEASE PROGRAM IN PECONIC BAY AND GARDINERS BAY

PUBLIC NOTICE

REQUEST FOR WRITTEN COMMENTS ON PROPOSED SHELLFISH AQUACULTURE LEASE SITES

Notice is hereby given that the Suffolk County Department of Economic Development and Planning has received eleven (11) applications for new shellfish aquaculture lease sites in Peconic and Gardiners Bay pursuant to Chapter 475, Article II of the Suffolk County Code. These applications were solicited under the 2022 Lease Application Cycle from new and existing shellfish farmers who are interested in obtaining access to a 10-acre lease site for the controlled raising, breeding, growing, and containment of shellfish through on-bottom and/or off-bottom culture techniques for a term of 10 years.

In accordance with Local Law 9-2021, *A Local Law to Amend, Update and Reorganize Chapter 475 Article II of the Suffolk County Code*, during Phase II (2021 -2030) of the Lease Program, the County will make 60 acres of new lease acreage available each year for new shellfish operations. The County may also accept applications for second lease site locations from existing leaseholders, which may be issued from the remaining Phase I Acreage Cap Limit. Given that the County did not conduct a 2021 Lease Cycle, 120 acres of new lease acreage was made available for leasing under the 2022 Lease Cycle; additionally, the County made 50 acres from the Phase I Acreage Cap available for second leases under this cycle.

Of the 11 applications that were received, nine were submitted by new shellfish farmers and two were submitted by existing leaseholders. Unallocated Phase II acreage shall be carried over and made available during the next Lease Cycle; unallocated Phase I acreage will go back into the Phase I cap and may be made available for second leases in future lease cycles. While each applicant was able to select up to three preferred lease sites, with the understanding they may only obtain a lease for one of their proposed sites, a few of the proposed lease sites were selected by more than one applicant; therefore this public notice identifies 24 proposed lease sites. All proposed sites are located within the adopted Revised Shellfish Cultivation Zone. Pertinent information on each of the 11 applications received, including the Lease Sites Map ID #'s, the name of the applicant, respective Application Reference # and the location (center point coordinates) for each lease site are contained in Attachment A to this Public Notice.

This Public Notice and a map showing the locations of all the proposed lease sites are available on the website listed below:

<https://www.suffolkcountyny.gov/Departments/Economic-Development-and-Planning/Planning-and-Environment/Environmental-Planning-and-Aquaculture/Shellfish-Aquaculture-Lease-Program>

Prior to deploying any shellfish culture gear on a lease site, lease applicants must execute a Shellfish Aquaculture Lease Agreement and obtain all required approvals and/or regulatory permits from the pertinent regulatory agencies for that lease site.

PUBLIC COMMENT:

Comments regarding the proposed lease sites must be prepared in writing and mailed to the contact person listed below. All comments must be post marked Monday, August 1, 2022. Such comments should be targeted to a specific lease site(s) by referencing the applicable Lease Site Map ID #(s), as shown on Attachment A in this Public Notice. The comments should include supporting documentation and data to the maximum extent possible. Those parties raising an objection to the leasing of a particular site or sites based on reasons of natural productivity and commercial fishery should send a notarized letter, stating the particular reason(s) for the objection. Documentation supporting the claim should also be provided, including a copy of the parties' commercial harvest license, and documentation on harvests and sales, as applicable.

Contact:

Suffolk County Department of Economic Development & Planning
Division of Planning & Environment
H. Lee Dennison Bldg. – 11th Floor
100 Veterans Memorial Highway
P.O. Box 6100
Hauppauge, NY 11788-0099
ATTN: Thomas Ralicky

Should any questions arise on the content of this Public Notice, please contact Ms. Susan Filipowich of my staff at 631-853-4775.

Sarah Lansdale, A.I.C.P.
Director, Division of Planning and Environment
Department of Economic Development & Planning

Attachment A: Sites Submitted for Evaluation under 2022 Lease Application Cycle

Applicant	Reference #	Lease Site Map ID#	Lease Center Point		Bay Location	Town	Operation Type
			Latitude	Longitude			
Brian Tuthill Management LLC	22.01.01.	T13*	41.13117091	-72.31957191	Orient Harbor	Southold	Off Bottom
		T10*	41.12863059	-72.32158337	Orient Harbor	Southold	Off Bottom
		T14*	41.12858149	-72.3181959	Orient Harbor	Southold	Off Bottom
Spinelli's Sea Farm LLC	22.01.02.	T2	40.94083215	-72.55653905	Great Peconic	Riverhead	On/Off Bottom
		12	40.94340874	-72.55309048	Great Peconic	Riverhead	On/Off Bottom
		31	40.93163979	-72.53458837	Great Peconic	Southold	On/Off Bottom
Invictus Oyster Company LLC	22.01.03.	597	41.01948882	-72.39693613	Little Peconic	Southold	Off Bottom
		666	41.0090134	-72.38067184	Little Peconic	Southampton	Off Bottom
		512	41.01977372	-72.41762195	Little Peconic	Southold	Off Bottom
Oysterponds Shellfish LLC	22.01.04.	T10*	41.12863059	-72.32158337	Orient Harbor	Southold	Off Bottom
		T14*	41.12858149	-72.3181959	Orient Harbor	Southold	Off Bottom
		T13*	41.13117091	-72.31957191	Orient Harbor	Southold	Off Bottom
Davy Jones Landing LLC	22.01.05.	290	40.96176724	-72.486604	Great Peconic	Southold	Off Bottom
		313	40.96428434	-72.48316668	Great Peconic	Southold	Off Bottom
		361	40.91220921	-72.47491712	Great Peconic	Southampton	Off Bottom
Lucas P. Krucher	22.01.06.	3	40.91365078	-72.58203935	Flanders	Southampton	Off Bottom
		11	40.94597019	-72.55303467	Great Peconic	Southold	Off Bottom
		9	40.94294806	-72.55985844	Great Peconic	Southold	Off Bottom
Manna Fish Farms Inc.	22.01.07.	333	40.91049438	-72.48439456	Great Peconic	Southampton	Off Bottom
		310	40.90797721	-72.48782921	Great Peconic	Southampton	Off Bottom
		306	40.91822298	-72.48759601	Great Peconic	Southampton	Off Bottom

Attachment A: Sites Submitted for Evaluation under 2022 Lease Application Cycle

Long Island Shellfish Company Inc.	22.01.08.	T10*	41.12863059	-72.32158337	Orient Harbor	Southold	On/Off Bottom
		T11	41.12606935	-72.32164828	Orient Harbor	Southold	On/Off Bottom
		T21	41.03592455	-72.25464991	Northwest Harbor	East Hampton	On/Off Bottom
MK Family Aqua Farms LLC	22.01.09.	415	40.98694124	-72.4510129	Cutchogue Harbor	Southold	On/Off Bottom
		400*	40.99214674	-72.45885921	Cutchogue Harbor	Southold	On/Off Bottom
		419	40.98172015	-72.44557729	Cutchogue Harbor	Southold	On/Off Bottom
APPLICATIONS FOR SECOND LEASE SITE LOCATIONS							
Summer Wind Oysters LLC	22.01.10.	T13*	41.13117091	-72.31957191	Orient Harbor	Southold	On/Off Bottom
		T14*	41.12858149	-72.3181959	Orient Harbor	Southold	On/Off Bottom
		T15	41.12602022	-72.31826093	Orient Harbor	Southold	On/Off Bottom
Matthew Ketcham	22.01.11.	400*	40.99214674	-72.45885921	Cutchogue Harbor	Southold	On/Off Bottom

(*) indicates the lease site was applied for by more than one applicant in this cycle.

This Public Notice and maps showing the locations of all the lease sites proposed for renewal are available on the website: <https://www.suffolkcountyny.gov/Departments/Economic-Development-and-Planning/Planning-and-Environment/Environmental-Planning-and-Aquaculture/Shellfish-Aquaculture-Lease-Program>

Applicant:

Brian Tuthill Management LLC
 1060 Navy Street
 Orient, New York 11957

Reference #: SCALP 22.01.01.

Proposed Lease Sites:

Lease Site Map ID #	Coordinate Location	Latitude	Longitude	Location & Town
T13*	NE Corner	41.13205062	-72.31835036	Orient Harbor, Southold
	SE Corner	41.13023956	-72.31839635	
	SW Corner	41.13027431	-72.31839635	
	NW Corner	41.13208537	-72.32074571	
T10*	NE Corner	41.12951032	-72.3203619	Orient Harbor, Southold
	SE Corner	41.12769926	-72.32040783	
	SW Corner	41.12773397	-72.32280302	
	NW Corner	41.12954503	-72.32275715	
T14*	NE Corner	41.12946119	-72.31697438	Orient Harbor, Southold
	SE Corner	41.12765013	-72.3170204	
	SW Corner	41.1276849	-72.31941559	
	NW Corner	41.12949596	-72.31936963	

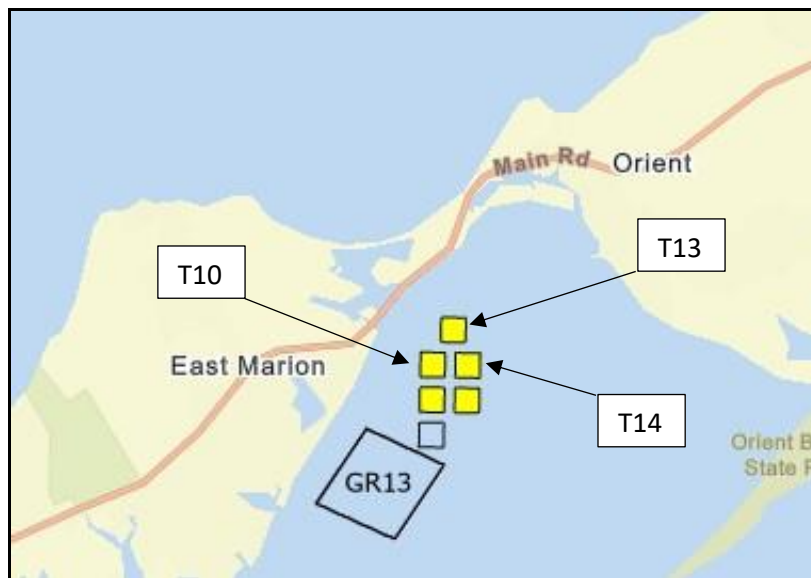
(*) indicates the lease site was applied for by more than one applicant in this cycle.

Proposed Lease Acreage: 10 acres

Proposed Lease Type: Commercial

Proposed Operation Type: Off-Bottom Culture

Cultivation Method: Submerged



Lease sites applied for under the 2022 Lease Application Cycle appear on this map in yellow. To view all proposed lease site from a regional perspective go to the SCALP Lease Status Mapper: <https://gis.suffolkcountyny.gov/portal/apps/View/index.html?appid=6ae708a346f340ada850544fe25ce0fb>

Applicant:

Spinelli's Sea Farms LLC
 78 Linden Street
 Massapequa, New York 11758

Reference #: SCALP 22.01.02.

Proposed Lease Sites:

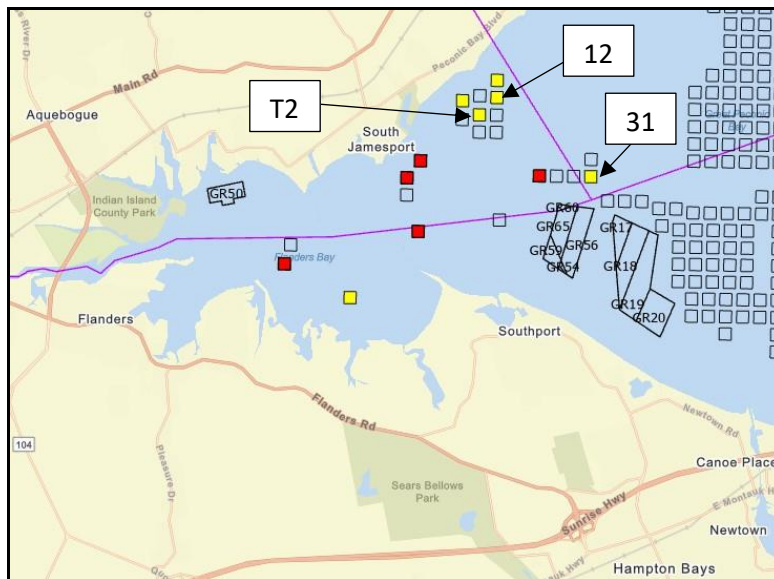
Lease Site Map ID #	Coordinate Location	Latitude	Longitude	Location & Town
T2	NE Corner	40.94171445	-72.55532411	Great Peconic Bay, Riverhead
	SE Corner	40.93990322	-72.5553635	
	SW Corner	40.93993307	-72.55775203	
	NW Corner	40.9417443	-72.5577127	
12	NE Corner	40.94429099	-72.55187544	Great Peconic Bay, Riverhead
	SE Corner	40.94247976	-72.55191493	
	SW Corner	40.94250968	-72.55430356	
	NW Corner	40.94432091	-72.55426413	
31	NE Corner	40.93252186	-72.5333733	Great Peconic Bay, Southold
	SE Corner	40.93071063	-72.53341329	
	SW Corner	40.93074094	-72.53580148	
	NW Corner	40.93255216	-72.53576156	

Proposed Lease Acreage: 10 acres

Proposed Lease Type: Commercial

Proposed Operation Type: On/Off-Bottom Culture

Cultivation Method: Submerged



Lease sites applied for under the 2022 Lease Application Cycle appear on this map in yellow. To view all proposed lease site from a regional perspective go to the SCALP Lease Status Mapper: <https://gis.suffolkcountyny.gov/portal/apps/View/index.html?appid=6ae708a346f340ada850544fe25ce0fb>

Name of Applicant:

Invictus Oyster Company LLC
 143 Toylesome Lane
 Southampton, New York 11698

Reference #: SCALP 22.01.03.

Proposed Lease Sites:

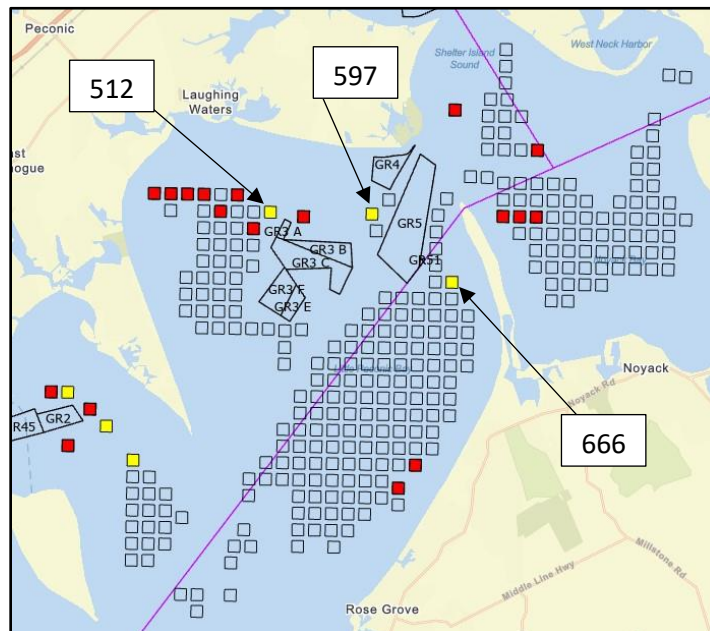
Lease Site	Location	Latitude	Longitude	Location & Town
597	NE Corner	41.0203694	-72.39571765	Little Peconic Bay, Southold
	SE Corner	41.01855826	-72.39576145	
	SW Corner	41.01859141	-72.39815274	
	NW Corner	41.02040255	-72.39810901	
666	NE Corner	41.00989381	-72.37945334	Little Peconic Bay, Southampton
	SE Corner	41.00808267	-72.37949758	
	SW Corner	41.00811615	-72.38188848	
	NW Corner	41.00992729	-72.38184431	
512	NE Corner	41.02065451	-72.41640374	Little Peconic Bay, Southold
	SE Corner	41.01884336	-72.41644698	
	SW Corner	41.01887609	-72.41883828	
	NW Corner	41.02068723	-72.41879511	

Proposed Lease Acreage: 10 acres

Proposed Lease Type: Commercial

Proposed Operation Type: Off-Bottom Culture

Cultivation Method: Submerged Cages



Lease sites applied for under the 2022 Lease Application Cycle appear on this map in yellow. To view all proposed lease site from a regional perspective go to the SCALP Lease Status Mapper: <https://gis.suffolkcountyny.gov/portal/apps/View/index.html?appid=6ae708a346f340ada850544fe25ce0fb>

Applicant:

Oysterponds Shellfish LLC
 1060 Navy Street
 Orient, New York 11957

Reference #: SCALP 22.01.04.

Proposed Lease Sites:

Lease Site Map ID #	Coordinate Location	Latitude	Longitude	Location & Town
T10*	NE Corner	41.12951032	-72.3203619	Orient Harbor, Southold
	SE Corner	41.12769926	-72.32040783	
	SW Corner	41.12773397	-72.32280302	
	NW Corner	41.12954503	-72.32275715	
T14*	NE Corner	41.12946119	-72.31697438	Orient Harbor, Southold
	SE Corner	41.12765013	-72.3170204	
	SW Corner	41.1276849	-72.31941559	
	NW Corner	41.12949596	-72.31936963	
T13*	NE Corner	41.132094	-72.320793	Orient Harbor, Southold
	SE Corner	41.132094	-72.318351	
	SW Corner	41.130248	-72.318351	
	NW Corner	41.130248	-72.318351	

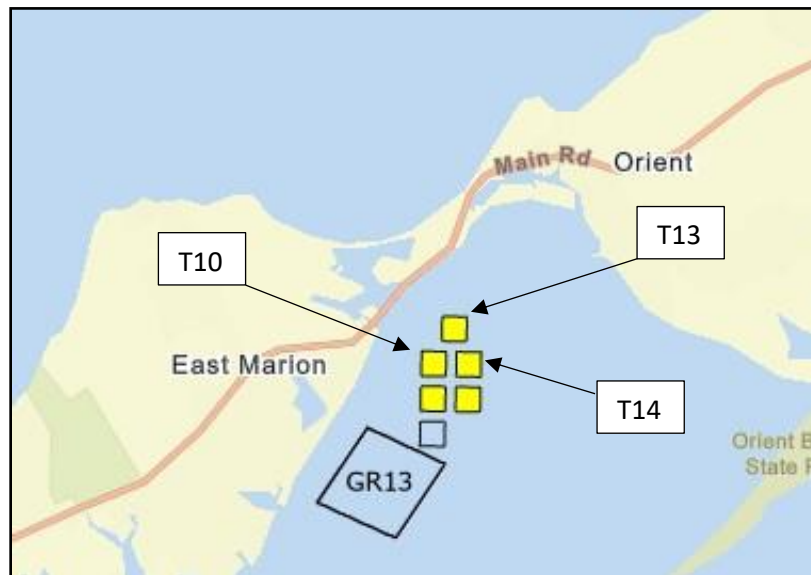
(*) indicates the lease site was applied for by more than one applicant in this cycle.

Proposed Lease Acreage: 10 acres

Proposed Lease Type: Commercial

Proposed Operation Type: Off-Bottom Culture

Cultivation Method: Submerged



Lease sites applied for under the 2022 Lease Application Cycle appear on this map in yellow. To view all proposed lease site from a regional perspective go to the SCALP Lease Status Mapper: <https://gis.suffolkcountyny.gov/portal/apps/View/index.html?appid=6ae708a346f340ada850544fe25ce0fb>

Applicant:

Davy Jones Landing LLC
 21 Ravenwood Drive
 Kings Park, New York 11754

Reference #: SCALP 22.01.05.

Proposed Lease Sites:

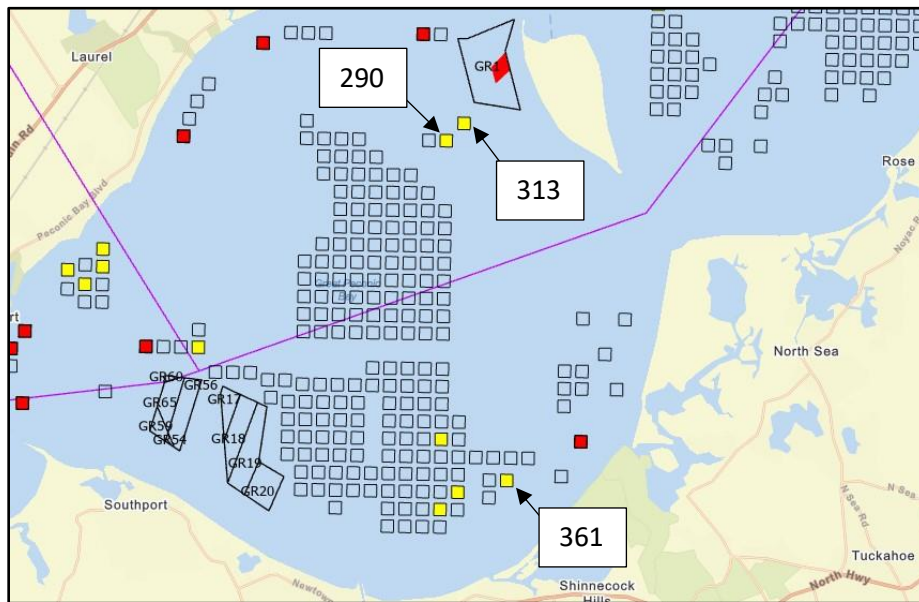
Lease Site Map ID #	Coordinate Location	Latitude	Longitude	Location & Town
290	NE Corner	40.96264878	-72.48538791	Great Peconic Bay, Southold
	SE Corner	40.96083759	-72.48542923	
	SW Corner	40.96086888	-72.48781848	
	NW Corner	40.96268008	-72.48777723	
313	NE Corner	40.96516585	-72.48195035	Great Peconic Bay, Southold
	SE Corner	40.96335466	-72.48199176	
	SW Corner	40.96338603	-72.4843811	
	NW Corner	40.96519722	-72.48433976	
361	NE Corner	40.91309065	-72.47370164	Great Peconic Bay, Southampton
	SE Corner	40.91127944	-72.47374324	
	SW Corner	40.91131098	-72.47613071	
	NW Corner	40.91312219	-72.47608917	

Proposed Lease Acreage: 10 acres

Proposed Lease Type: Commercial

Proposed Operation Type: Off-Bottom Culture

Cultivation Method: Submerged



Lease sites applied for under the 2022 Lease Application Cycle appear on this map in yellow. To view all proposed lease site from a regional perspective go to the SCALP Lease Status Mapper: <https://gis.suffolkcountyny.gov/portal/apps/View/index.html?appid=6ae708a346f340ada850544fe25ce0fb>

Applicant:

Lucas P. Krucher
 2746 Harvard Place
 Baldwin, New York 11510

Reference #: SCALP 22.01.06.

Proposed Lease Sites:

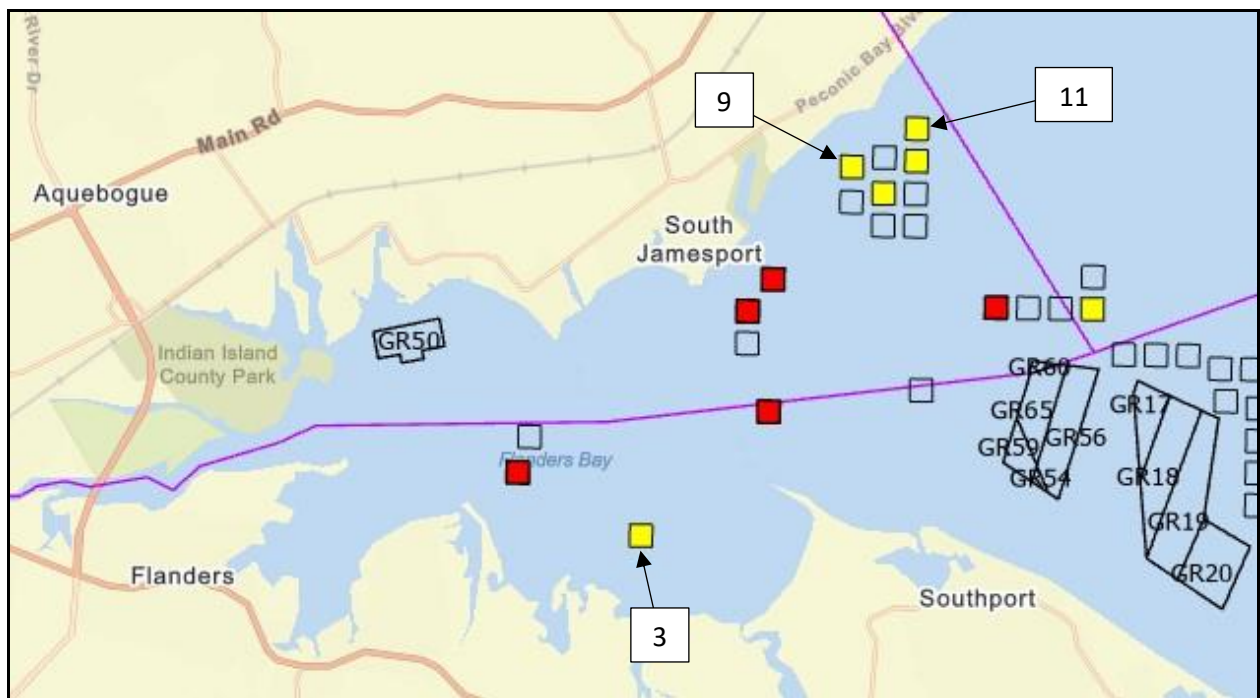
Lease Site Map ID #	Coordinate Location	Latitude	Longitude	Location & Town
3	NE Corner	40.91453335	-72.58082524	Flanders Bay, Southampton
	SE Corner	40.9127221	-72.58086392	
	SW Corner	40.91275142	-72.58325149	
	NW Corner	40.91456267	-72.58321287	
11	NE Corner	40.94685245	-72.55181959	Great Peconic Bay, Riverhead
	SE Corner	40.94504122	-72.55185908	
	SW Corner	40.94507114	-72.5542478	
	NW Corner	40.94688237	-72.55420837	
9	NE Corner	40.94383038	-72.5586435	Great Peconic Bay, Riverhead
	SE Corner	40.94201916	-72.5586828	
	SW Corner	40.94204894	-72.56107141	
	NW Corner	40.94386017	-72.56103217	

Proposed Lease Acreage: 10 acres

Proposed Lease Type: Commercial

Proposed Operation Type: Off-Bottom

Cultivation Method: Submerged



Lease sites applied for under the 2022 Lease Application Cycle appear on this map in yellow. To view all proposed lease site from a regional perspective go to the SCALP Lease Status Mapper: <https://gis.suffolkcountyny.gov/portal/apps/View/index.html?appid=6ae708a346f340ada850544fe25ce0fb>

Name of Applicant:

Manna Fish Farms, Inc.
22 Inlet Road West
Hampton Bays, New York 11946

Reference #: SCALP 22.01.07.

Proposed Lease Sites:

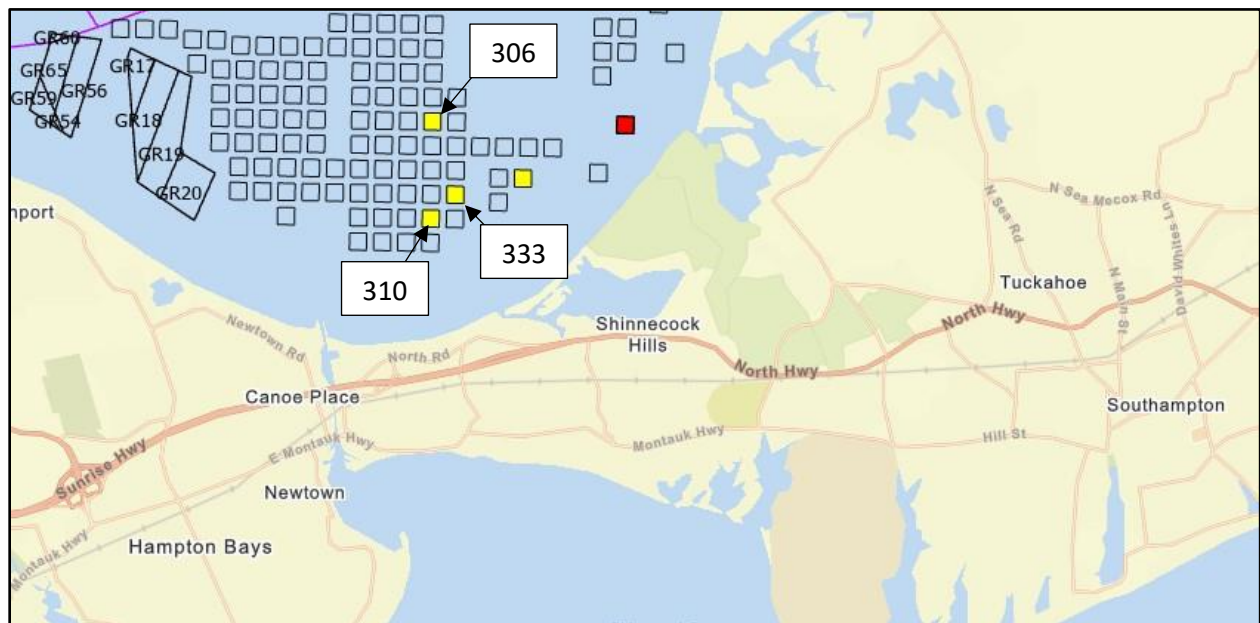
Lease Site Map ID #	Coordinate Location	Latitude	Longitude	Location & Town
333	NE Corner	40.91137593	-72.48317923	Great Peconic Bay, Southampton
	SE Corner	40.90956471	-72.48322058	
	SW Corner	40.90959605	-72.48560798	
	NW Corner	40.91140727	-72.48556671	
310	NE Corner	40.90885879	-72.48661396	Great Peconic Bay, Southampton
	SE Corner	40.90704758	-72.48665521	
	SW Corner	40.90707885	-72.48904253	
	NW Corner	40.90889006	-72.48900135	
306	NE Corner	40.91910455	-72.48638058	Great Peconic Bay, Southampton
	SE Corner	40.91729334	-72.48642185	
	SW Corner	40.91732461	-72.48880953	
	NW Corner	40.91913583	-72.48876834	

Proposed Lease Acreage: 10 acres

Proposed Lease Type: Commercial

Proposed Operation Type: Off Bottom

Cultivation Method: Submerged



Lease sites applied for under the 2022 Lease Application Cycle appear on this map in yellow. To view all proposed lease site from a regional perspective go to the SCALP Lease Status Mapper: <https://gis.suffolkcountyny.gov/portal/apps/View/index.html?appid=6ae708a346f340ada850544fe25ce0fb>

Name of Applicant:

Long Island Shellfish Company Inc.
40 Doyle Street
Long Beach, New York 11561

Reference #: SCALP 22.01.08

Proposed Lease Sites:

Lease Site Map ID #	Coordinate Location	Latitude	Longitude	Location & Town
T10*	NE Corner	41.12951032	-72.3203619	Orient Harbor, Southold
	SE Corner	41.12769926	-72.32040783	
	SW Corner	41.12773397	-72.32280302	
	NW Corner	41.12954503	-72.32275715	
T11	NE Corner	41.12694909	-72.32042686	Orient Harbor, Southold
	SE Corner	41.12513802	-72.32047278	
	SW Corner	41.12517273	-72.32286788	
	NW Corner	41.12698379	-72.32282202	
T21	NE Corner	41.03680362	-72.25342927	Northwest Harbor, East Hampton
	SE Corner	41.03499254	-72.25347697	
	SW Corner	41.03502863	-72.25586877	
	NW Corner	41.03683971	-72.25582114	

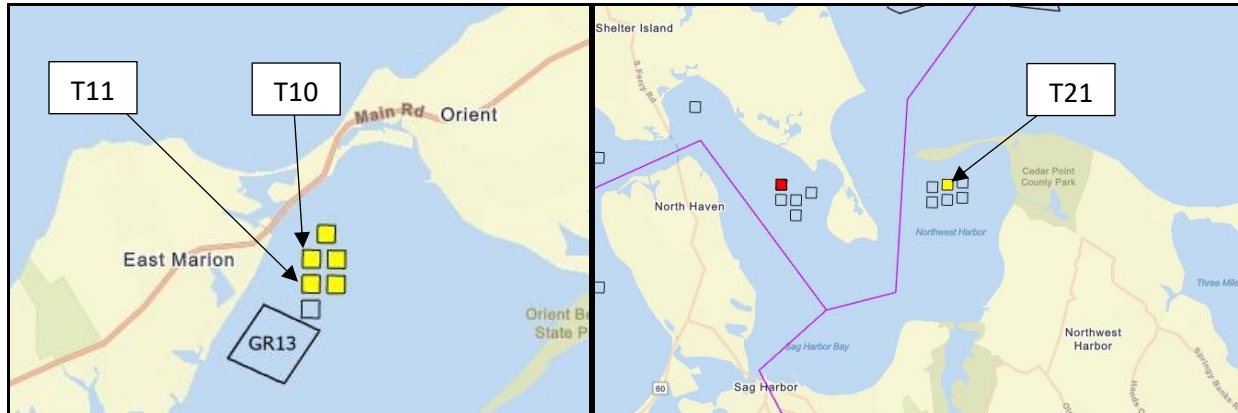
(*) indicates the lease site was applied for by more than one applicant in this cycle.

Proposed Lease Acreage: 10 acres

Proposed Lease Type: Commercial

Proposed Operation Type: On-/Off-Bottom

Cultivation Method: Submerged/Floating



Lease sites applied for under the 2022 Lease Application Cycle appear on this map in yellow. To view all proposed lease site from a regional perspective go to the SCALP Lease Status Mapper: <https://gis.suffolkcountyny.gov/portal/apps/View/index.html?appid=6ae708a346f340ada850544fe25ce0fb>

Name of Applicant:

MK Family Aqua Farms LLC
 6 Frost Pond Drive
 Roslyn, New York 11576

Reference #: SCALP 22.01.09.

Proposed Lease Sites:

Lease Site Map ID #	Coordinate Location	Latitude	Longitude	Location & Town
415	NE Corner	40.9878224	-72.44979573	Cutchogue Harbor, Southold
	SE Corner	40.98601123	-72.44983803	
	SW Corner	40.98604326	-72.45222817	
	NW Corner	40.98785443	-72.45218594	
400*	NE Corner	40.99302798	-72.45764205	Cutchogue Harbor, Southold
	SE Corner	40.99121681	-72.45768414	
	SW Corner	40.99124867	-72.46007448	
	NW Corner	40.99305985	-72.46003245	
419	NE Corner	40.98260126	-72.44436014	Cutchogue Harbor, Southold
	SE Corner	40.98079008	-72.44440259	
	SW Corner	40.98082223	-72.44679254	
	NW Corner	40.9826334	-72.44675016	

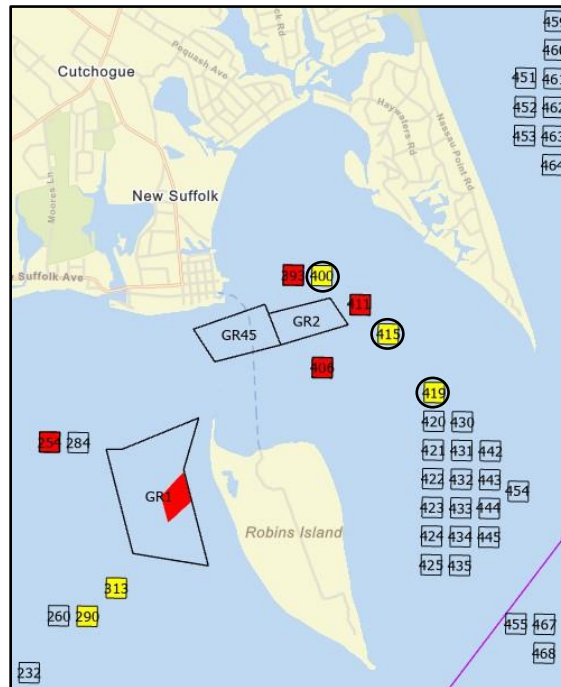
(*) indicates the lease site was applied for by more than one applicant in this cycle.

Proposed Lease Acreage: 10 acres

Proposed Lease Type: Commercial

Proposed Operation Type: On-/Off-Bottom

Cultivation Method: Submerged/floating



Lease sites applied for under the 2022 Lease Application Cycle appear on this map in yellow. To view all proposed lease site from a regional perspective go to the SCALP Lease Status Mapper: <https://gis.suffolkcountyny.gov/portal/apps/View/index.html?appid=6ae708a346f340ada850544fe25ce0fb>

Name of Applicant:

Summer Wind Oysters LLC
 500 Peconic Street. #24-3a
 Ronkonkoma, NY 11779

Reference #: SCALP 22.01.10.

Proposed Lease Sites:

Lease Site Map ID#	Location	Latitude	Longitude	Location & Town
T13*	NE Corner	41.13205062	-72.31835036	Orient Harbor, Southold
	SE Corner	41.13023956	-72.31839635	
	SW Corner	41.13027431	-72.32079163	
	NW Corner	41.13208537	-72.32074571	
T14*	NE Corner	41.12946119	-72.31697438	Orient Harbor, Southold
	SE Corner	41.12765013	-72.3170204	
	SW Corner	41.1276849	-72.31941559	
	NW Corner	41.12949596	-72.31936963	
T15*	NE Corner	41.12689992	-72.31703946	Orient Harbor, Southold
	SE Corner	41.12508886	-72.31708548	
	SW Corner	41.12512363	-72.31948057	
	NW Corner	41.12693469	-72.31943462	

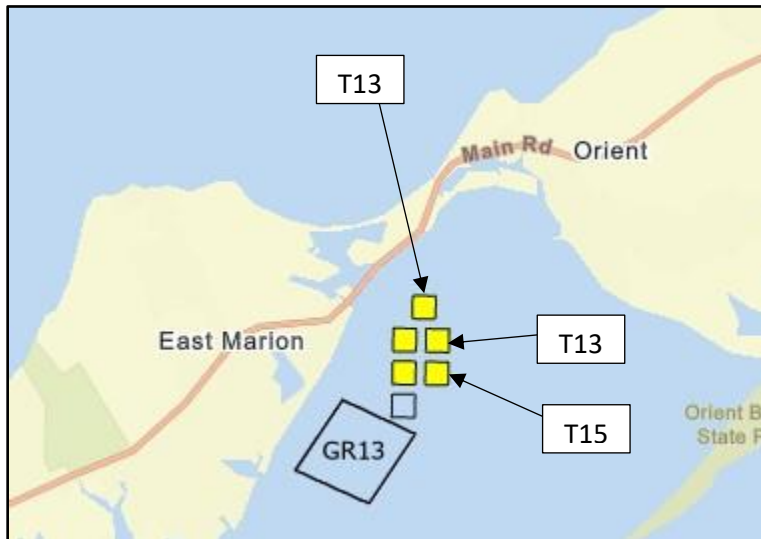
(*) indicates the lease site was applied for by more than one applicant in this cycle.

Proposed Lease Acreage: 10 acres

Proposed Lease Type: Commercial

Proposed Operation Type: On/Off Bottom

Cultivation Method: Submerged/ Floating



Lease sites applied for under the 2022 Lease Application Cycle appear on this map in yellow. To view all proposed lease site from a regional perspective go to the SCALP Lease Status Mapper: <https://gis.suffolkcountyny.gov/portal/apps/View/index.html?appid=6ae708a346f340ada850544fe25ce0fb>

Name of Applicant:

Matthew Ketcham
203 River Avenue
Patchogue, NY 11772

Reference #: SCALP 22.01.11.

Proposed Lease Sites:

Lease Site	Location	Latitude	Longitude	Location & Town
400*	NE	40.99302798	-72.45764205	Cutchogue Harbor, Southold
	SE	40.99121681	-72.45768414	
	SW	40.99124867	-72.46007448	
	NW	40.99305985	-72.46003245	

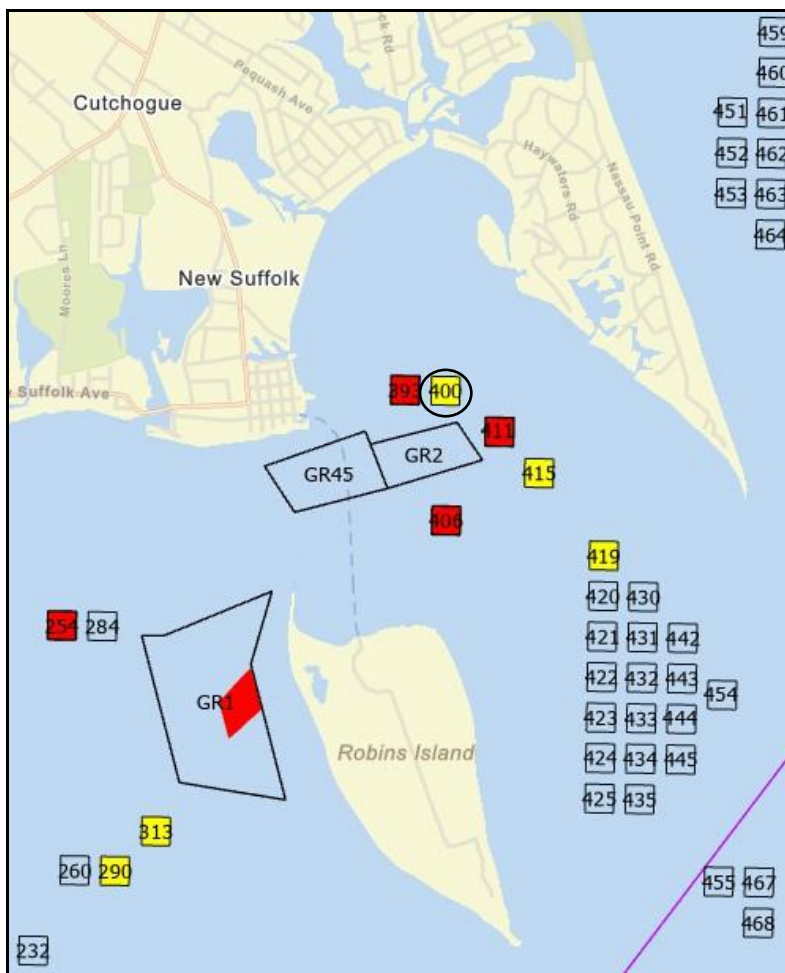
(*) indicates the lease site was applied for by more than one applicant in this cycle.

Proposed Lease Acreage: 10 acres

Proposed Lease Type: Commercial

Proposed Operation Type: On/Off Bottom

Cultivation Method: Submerged/Floating



Lease sites applied for under the 2022 Lease Application Cycle appear on this map in yellow. To view all proposed lease site from a regional perspective go to the SCALP Lease Status Mapper: <https://gis.suffolkcountyny.gov/portal/apps/View/index.html?appid=6ae708a346f340ada850544fe25ce0fb>